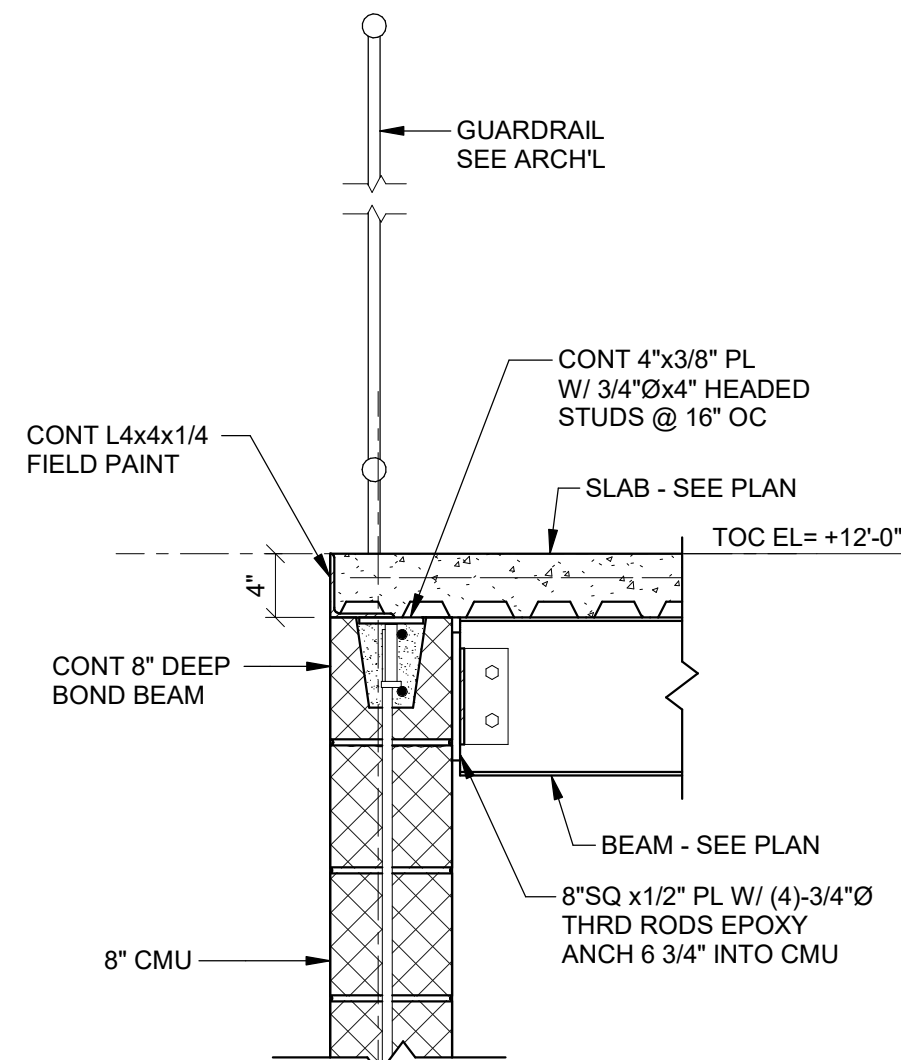
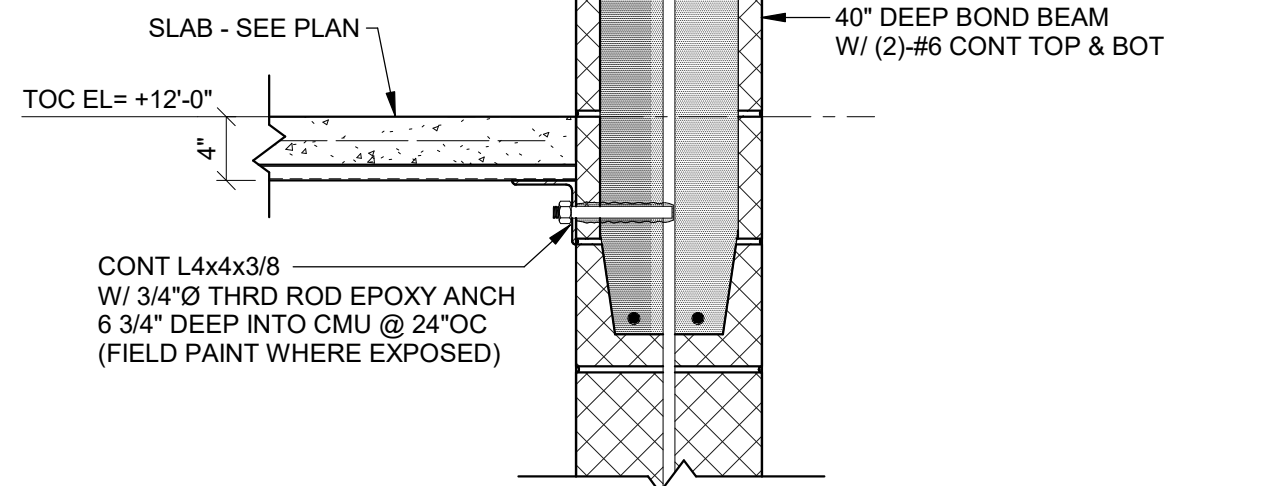


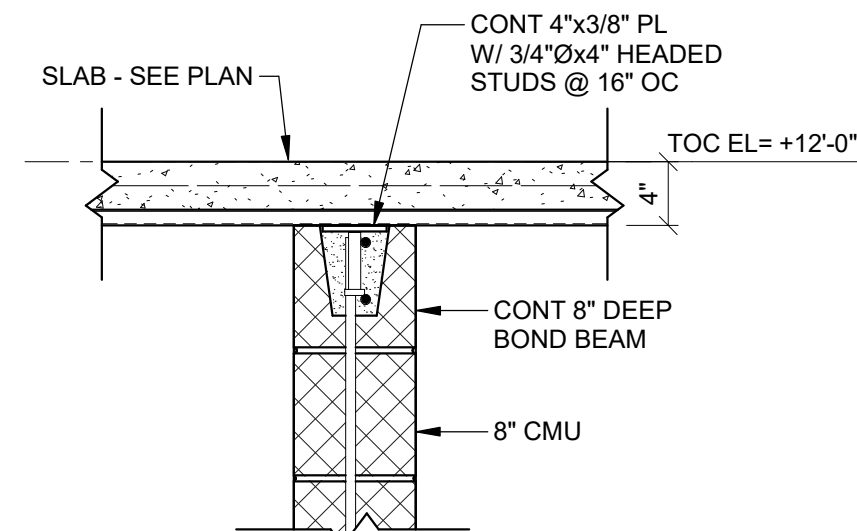
**SECTION 1**  
SCALE: 1" = 1'-0"



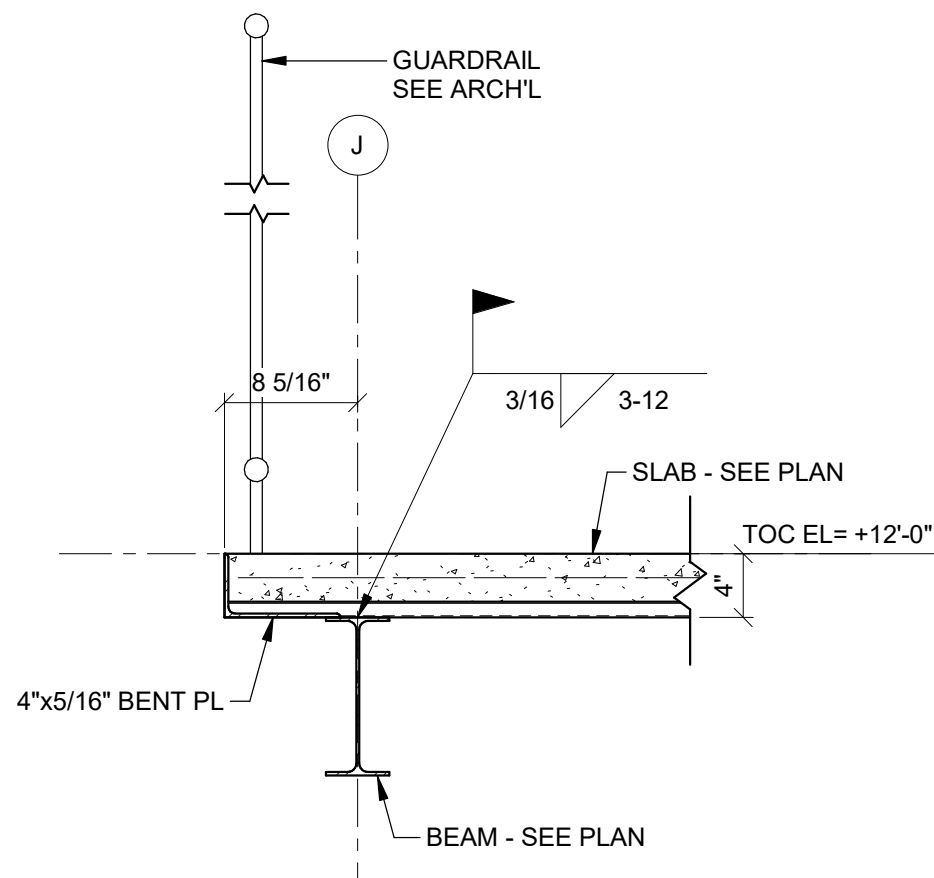
**SECTION 2**  
SCALE: 1" = 1'-0"



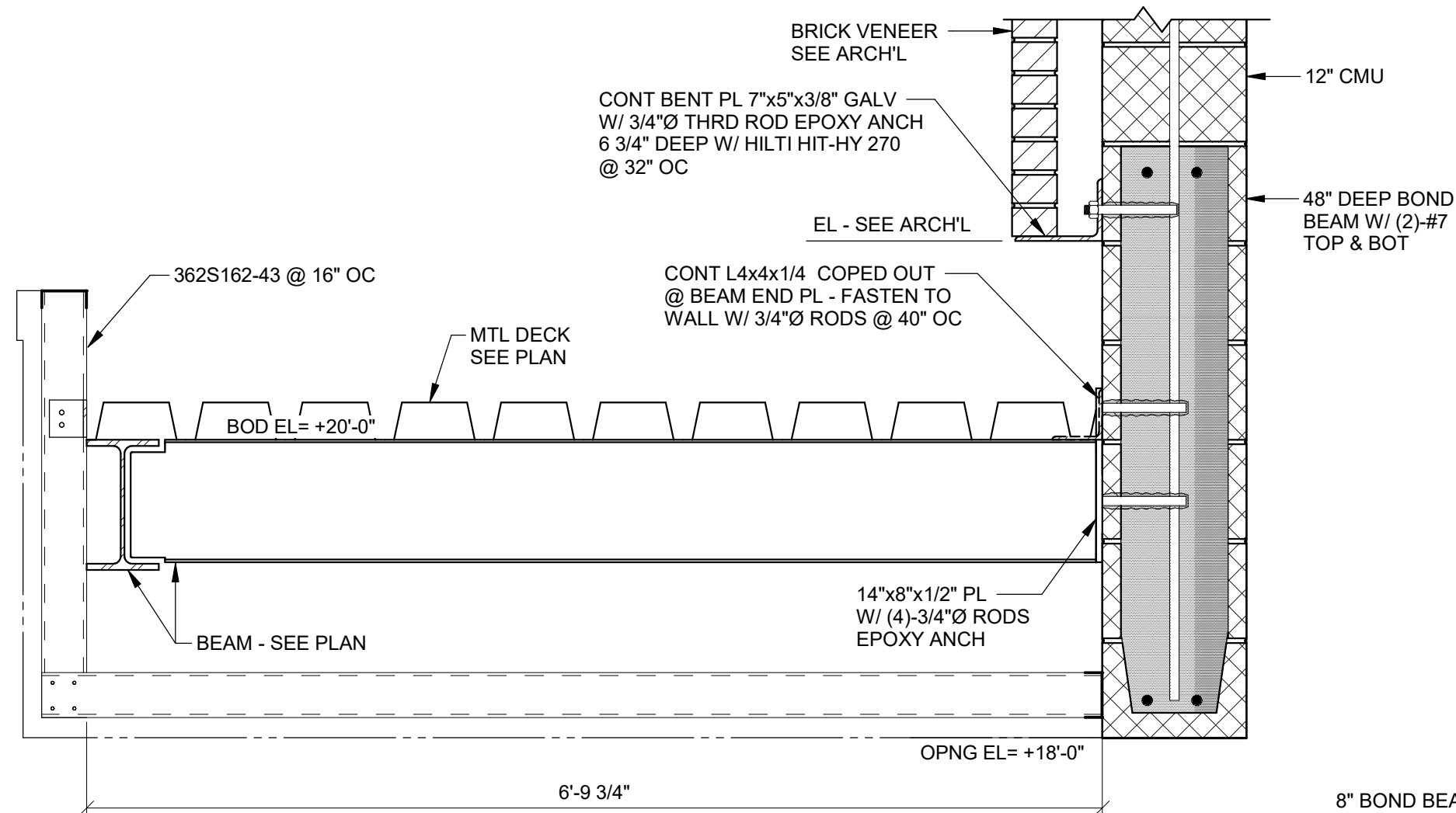
**SECTION 3**  
SCALE: 1" = 1'-0"



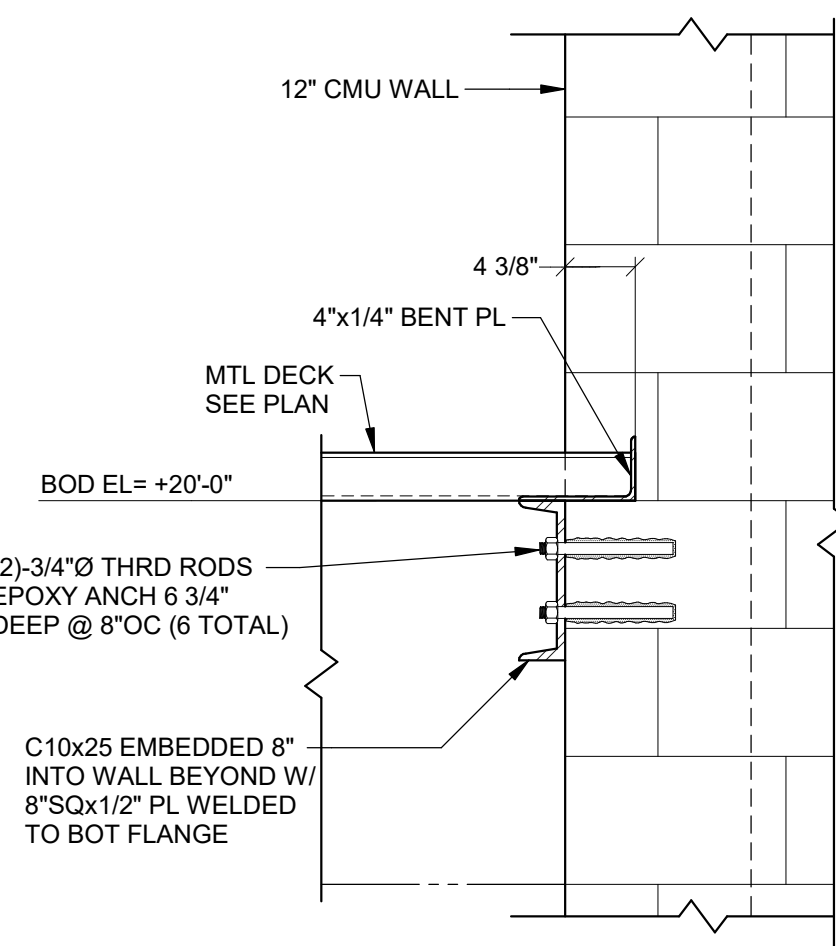
**SECTION 4**  
SCALE: 1" = 1'-0"



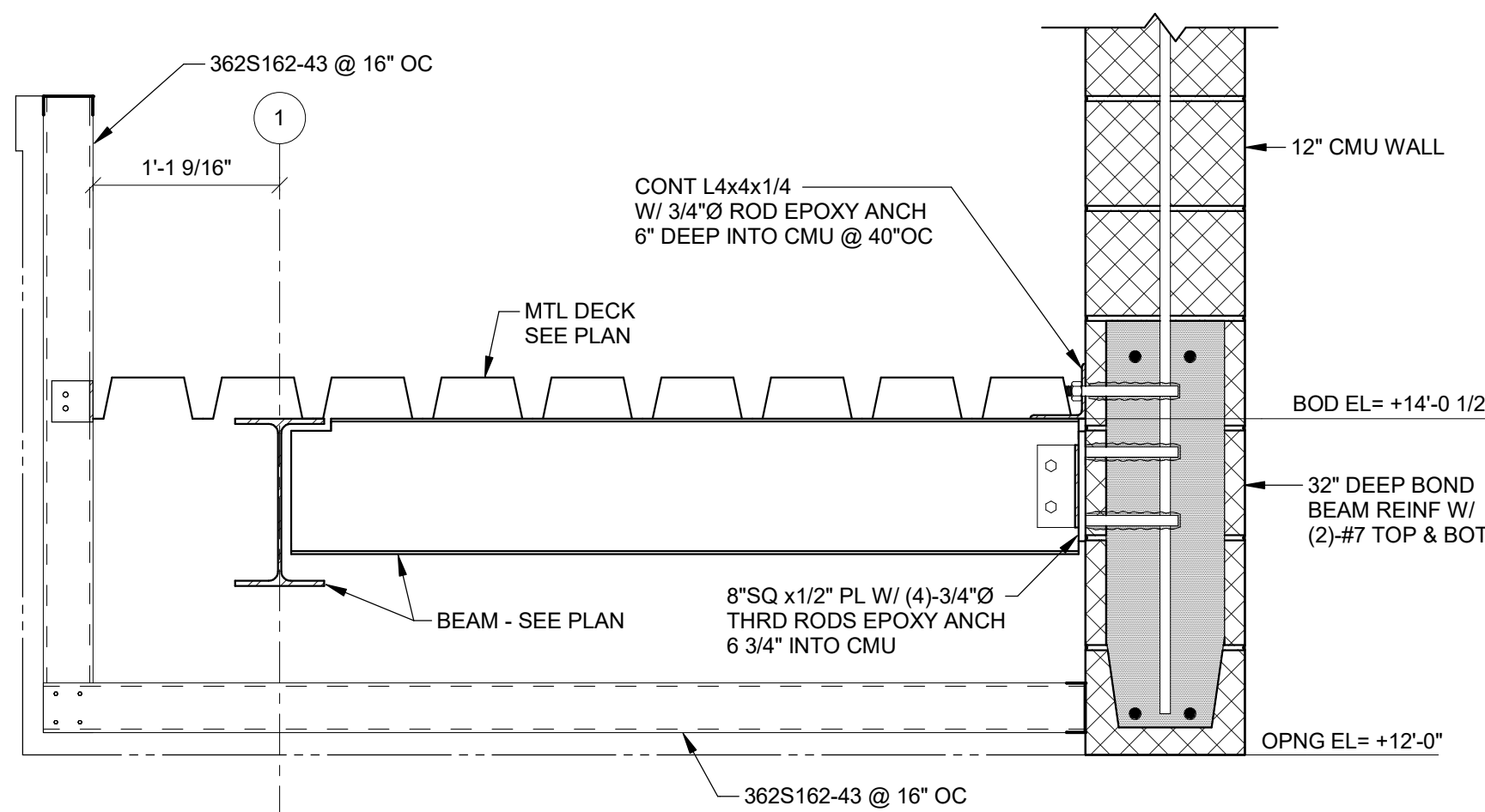
**SECTION 5**  
SCALE: 1" = 1'-0"



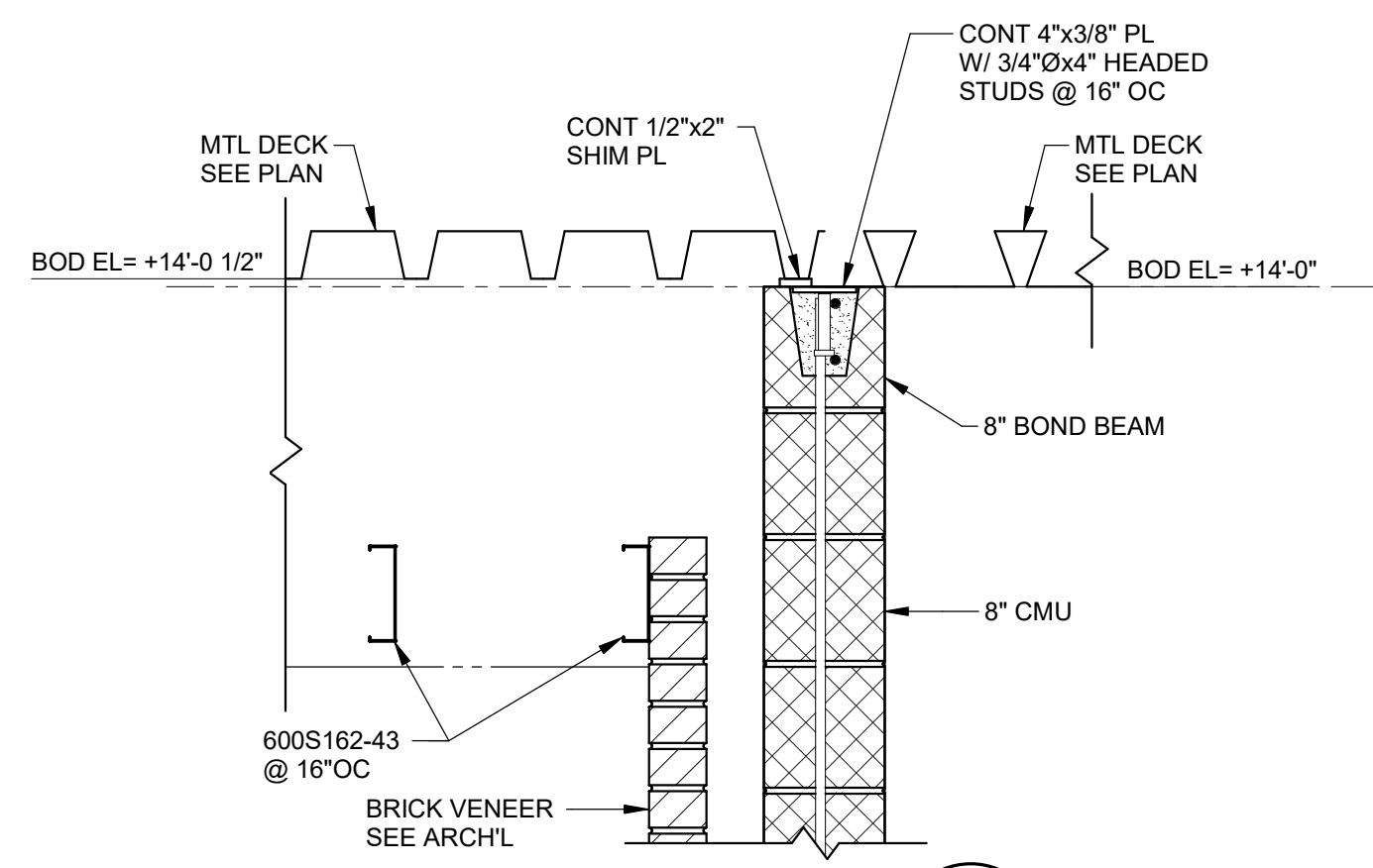
**SECTION 6**  
SCALE: 1" = 1'-0"



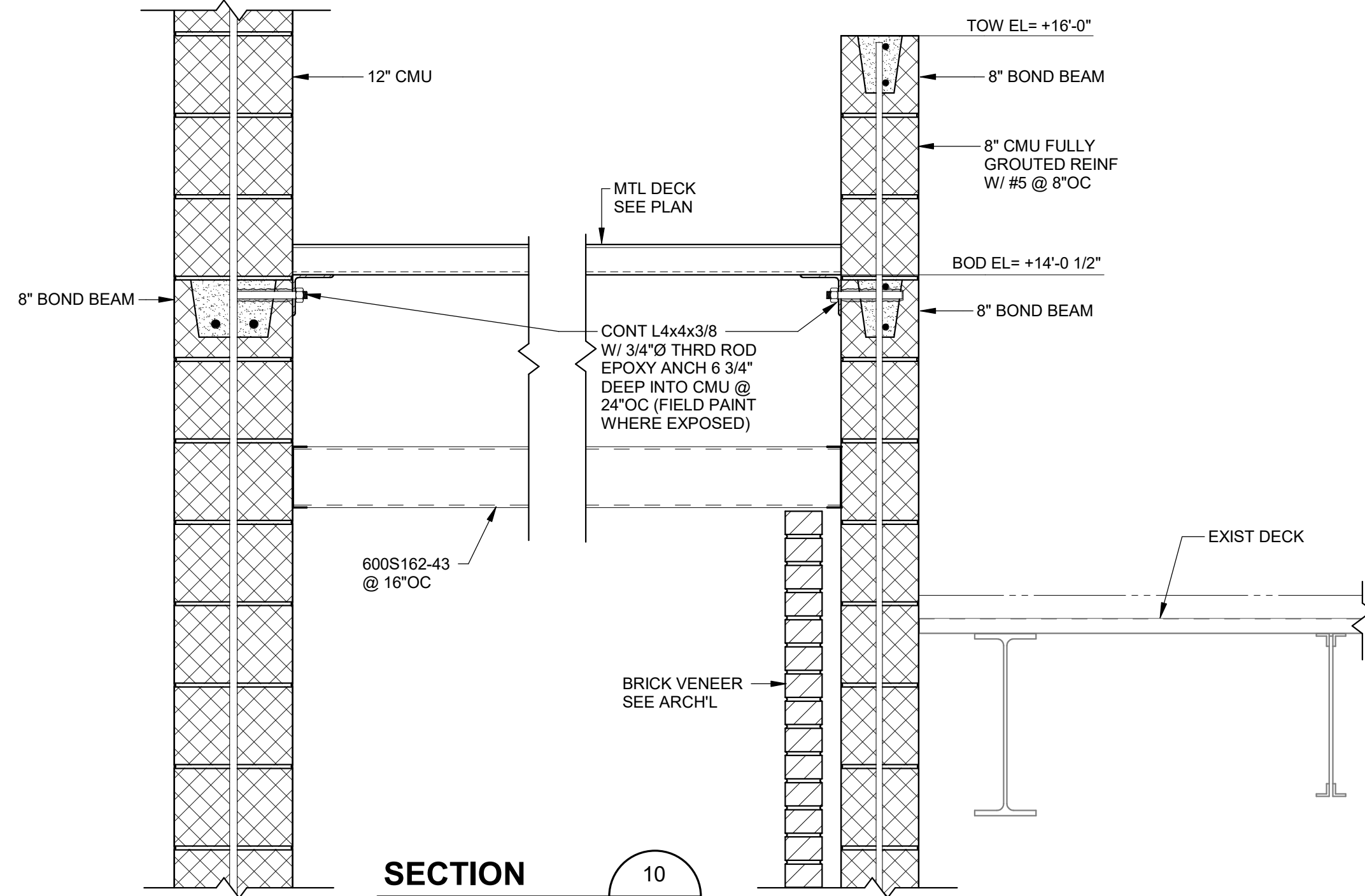
**SECTION 7**  
SCALE: 1" = 1'-0"



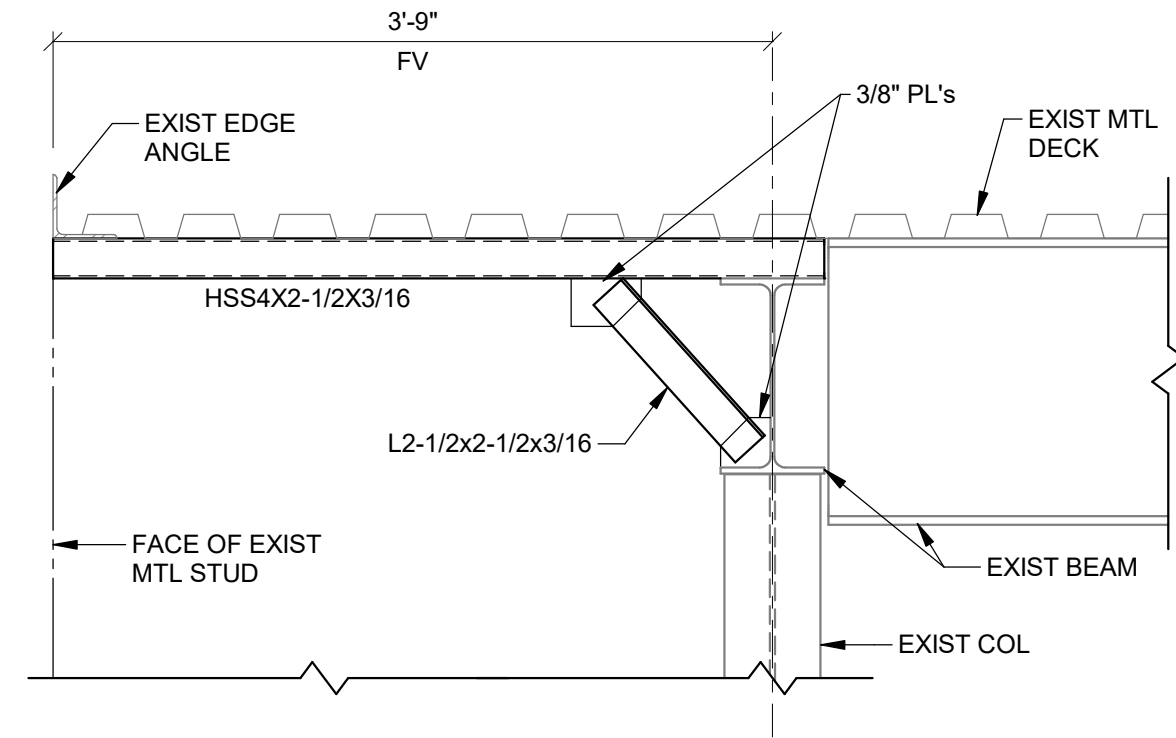
**SECTION 8**  
SCALE: 1" = 1'-0"



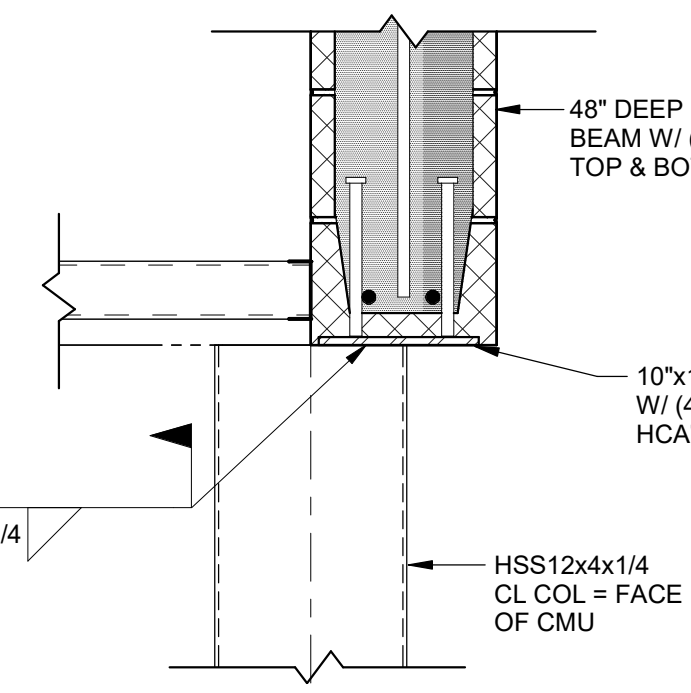
**SECTION 9**  
SCALE: 1" = 1'-0"



**SECTION 10**  
SCALE: 1" = 1'-0"



**SECTION 11**  
SCALE: 1" = 1'-0"



**SECTION 12**  
SCALE: 1" = 1'-0"

TBA STUDIO  
ARCHITECTURE  
103 Cypress Street  
West Monroe, LA 71291  
Tel. 318.340.1550  
Fax. 318.998.1315  
www.tbastudio.com

**TBA**

SCHOOL OF CONSTRUCTION PRACTICE  
LAB BUILDING, UNIVERSITY OF  
LOUISIANA MONROE

507 Filhiol Ave., Monroe, LA 71203

DRAWING REVISIONS

No.	Description	Date

DRAWN BY: JDT

CHECKED BY: JDT

SHEET

**S3.02**

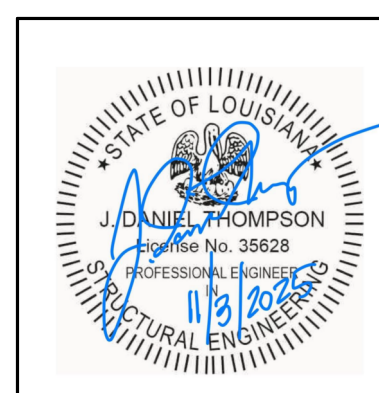
Date: NOV 2025

Project No.: 24-0059

File Name:

DESCRIPTION:

FRAMING SECTIONS



CONSULTING ENGINEERS  
3003 KNIGHT STREET, SUITE 120  
SHREVEPORT, LOUISIANA 71105  
phone: 318-425-7452 fax: 318-425-4622  
www.AFJMc.com

ENGINEER: J. DANIEL THOMPSON, PE, SE  
LICENSE NO.: 35628

THESE DRAWINGS DO NOT INCLUDE NECESSARY COMPONENTS FOR CONSTRUCTION SAFETY 25-033

COPYRIGHT NOTICE:  
THIS ENGINEERING DRAWING SHALL BE USED ONLY PURSUANT TO THE AGREEMENT WITH AFJMC. NO OTHER USE, DISSEMINATION OR DUPLICATION MAY BE MADE WITHOUT PRIOR WRITTEN CONSENT OF AFJMC. ALL COMMON LAW RIGHTS OF COPYRIGHT AND OTHERWISE ARE HEREBY SPECIFICALLY RESERVED.